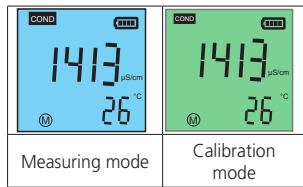
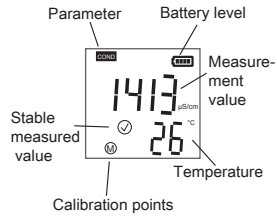


Display



Keyboard function

Short keystroke (1 sec.) - Long keystroke (3 sec.)

	Short keystroke		Switch on device
	Long keystroke		Switch off device
	Short keystroke	in the measuring mode	Backlight on/off
	Long keystroke	in the off mode	Open settings
	Short keystroke	in the calibration mode	Cancelling the calibration
	Short keystroke	in the measuring mode	Change of measuring parameters or unit
	Short keystroke	In setting	<ul style="list-style-type: none"> Navigation through settings (P1-P7) Change setting
	Long keystroke	in the measuring mode	Start calibration
	Short keystroke	in the calibration mode	Calibration
	Short keystroke	In setting	Selection or confirmation of a setting
	Short keystroke	at "Auto-HOLD"	Cancel "HOLD" function
	Short keystroke		

Settings

In off mode, press for 3 seconds: Opening Settings.



Navigate

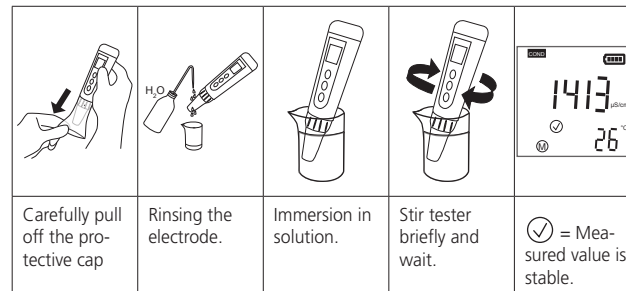


Confirm

Blue marked = factory setting

Parameter	Selection	Meaning
P1 Auto-Hold	a) On b) Off	when: Measured value min. 10 s stable Auto-Hold switched off
P2 Backlight	a) On b) 1 min c) Off	Switched on continuously Switched on for 1 minute Continuously switched off
P3 Temperature compensation coefficient	0 - 4% 2%	Setting the linear temperature compensation
P4 TDS conversion factor	0.4 - 1 0.71	Setting of the TDS conversion factor
P5 Salinity Unit	a) ppt b) g/L	Display in ppt Display in g/L
P6 Temperature unit	a) °C b) °F	Display in °C Display in °F
P7 Factory calibration	a) Yes b) No	Calibration is reset

Measurement of the parameters



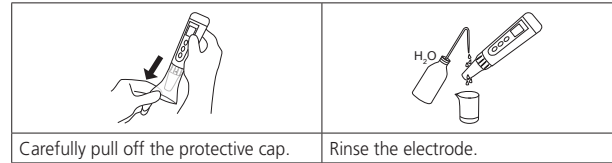
Note:

- Change between conductivity (COND), TDS and salinity (SAL)
- Press at "Hold" for new measurement recording.

Calibration conductivity

Note: Recommendation: 1-point calibration depending on the measuring range.

Measuring range	Calibration solution
0 - 100 µS/cm	84 µS/cm
100 - 2000 µS/cm	1413 µS/cm
2 - 20 mS/cm	12,88 mS/cm



Carefully pull off the protective cap.

Rinse the electrode.

1.		Select conductivity (COND)	2.		Immersion in recommended calibration solution.
3.		Press for 3 sec: Calibration mode (screen green)	4.		Stir tester briefly and wait. ✓ = Calibration value stable
5.		Press for 1 sec: Start calibration.			

After successful 1, 2 or 3 point calibration, is shown on the display:

	84 µS/cm
	1413 µS/cm
	12,88mS/cm

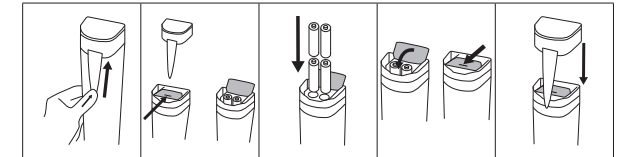
Note: 1000 µS/cm = 1 mS/cm

SD 30 Con - TDS - Salt/T Specifications

Conductivity (mS/cm)	Measuring range: 0.01-20; resolution: 0.01; accuracy: ±1% F.S.
TDS (ppt)	Measuring range: 0.01-20; resolution: 0.01
Salinity (ppt)	Measuring range: 0.01-10; resolution: 0.01
Temperature (°C)	Measuring range: 0-50; resolution: 0.1; accuracy: ±0.5
Background light	Blue: Measurement; Green: Calibration
HOLD	Measured value is frozen
	Flashing, battery change is required
Auto. switch off	after 8 minutes without operation
Housing protection type	IP67
Batteries	4 x AAA Batteries

Replacing the electrode	Storage of the electrode

Exchange batteries



Caution: Insert all batteries with the positive terminal facing up. Incorrect insertion of the batteries could result in damage to the meter.

Note: Make sure that the battery cover is completely closed to ensure water tightness.

Error messages and procedure

	Reason	Procedure
Err 1	old calibration	Use of new calibration solutions
Err 2	-Key pressed too early	Wait for then press
Measured value fluctuates	Contamination	Cleaning the electrode with detergent Rinse the electrode with deionised Water Important: Do not rub the black pins as the platinum coating may be damaged.

Accessories

Art.-No.	Description
726654	Conductivity solution 1413 µS/cm (NIST), 90 ml
726684	Conductivity solution 12.88 mS/cm (NIST), 90 ml
720035	SD30 Con/TDS/Salt/T replacement electrode
1950026	AAA batteries, set of 4
384801	Measuring beaker 100 ml
457022	Deionised water for rinsing

Warranty

The warranty period for the SD30 is 2 years from the date of purchase and 6 months for the electrode. Excluded from the warranty are damages caused by improper handling or mechanical damage.

Complete instructions with accessories list can be found at www.lovibond.com (Download Centre).